

# CERTIFICATE OF LOCATION OF GOVERNMENT CORNER

NORTHEAST Corner of Section 11, Township 107, Range 40, 5TH P.M.

STATE OF MINNESOTA, County of MURRAY

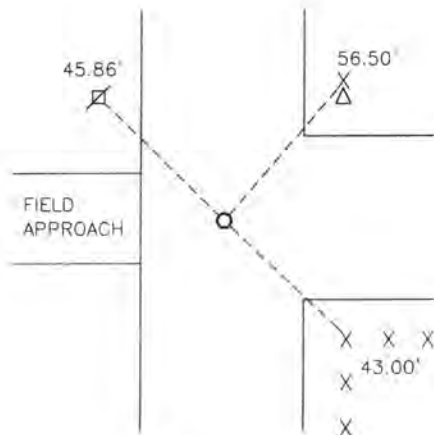
At the corner location shown on the sketch:

On 04-25-2017 found a A STONE OVER ANOTHER STONE.  
DATE

left monument as found,  lowered monument,  removed monument (explain)

On 04-25-2017 placed a 5/8" IRON WITH SEAL #50343 OVER STONE.  
DATE

### SKETCH OF REFERENCE TIES



Minnesota State Plane Coordinate  
System Murray County Datum  
NAD83 (1996)

N: 189887.613  
E: 543092.761

Nail and bottle cap in utility post NW 45.86'  
Nail and bottle cap in pedestal guard post NE 56.50'  
Nail and bottle cap in corner fence post SE 43.00'

Statement of evidence relative to this corner location is on back of page.

I hereby certify that this document and the data contained herein was prepared by me or under my direct supervision:

[Signature] 2/19/18  
SIGNATURE DATE

Registration No. 50343

Land Surveyor,  Professional Engineer  
 County Surveyor,  County Engineer

STATE OF MINNESOTA, } ss.  
COUNTY OF MURRAY, }

I hereby certify that the within Instrument was filed in this office for record on the 26<sup>TH</sup> day of MARCH A.D. 20 18 at 9:00 o'clock A: M, and was duly recorded as Document No. \_\_\_\_\_

Evelyn C. Larson  
County Recorder

## Statement of Evidence

In 1861, L. Brockmann did the original subdivision of the township.

On April 25, 2017, Bueltel-Moseng Land Surveying dug with a backhoe and found a stone over another stone 1'± below the surface. We lowered the stones and set a 5/8" iron with seal #50343 over them.